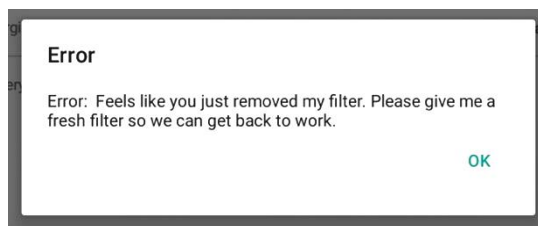
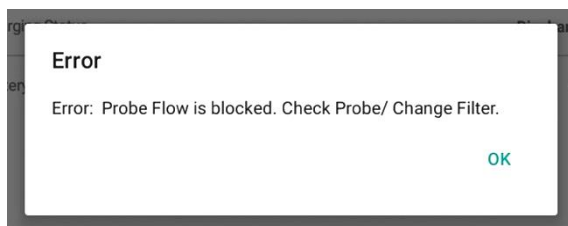




phx42 Probe Testing Adapter Now Available

The Probe Testing Adapter is designed to help you identify the root cause of filter-related errors such as:



How to use the Probe Testing Adapter

When a filter error is not resolved by following the on-screen prompts:

1. Remove the probe, attach the Probe Testing Adapter with a clean probe tip filter directly to the phx42, and run a self-check.
2. If there are no errors, then the probe was the cause of the issue. Report the probe issue to LDARtools Support.
3. If there are errors, submit the issue to LDARtools and comment: "Self-check completed with Probe Testing Adapter."



The [Probe Testing Adapter \(LDAR#4300\)](#) is now available on StoreLDAR.com and will ship with phx42 tool kits (LDAR#4203) beginning April 1, 2021.